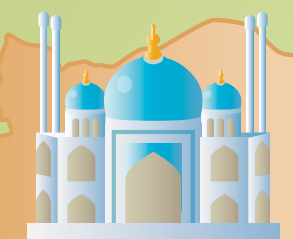




Turkey

Bulgaria

Greece



Syria

Zetes
Coal-fired Power Plant
Capacity : 160 MW + 600 MW x 2
13 Pumps incl.
Main Cooling Water Pumps

Samsun
Combined Cycle Power Plant
Capacity : 870 MW
4 Pumps
Closed Circuit Cooling Water Pump

Bekirli
Coal-fired Power Plant
Capacity : 600 MW x 2
3 Pumps
Main Cooling Water Pumps

Cayirhan 3&4
Coal-fired Power Plant
Capacity : 150 MW x 2
30 Pumps incl.
Raw Water Pumps

Kangal
Coal-fired Power Plant
Capacity : 450 MW
27 Pump incl.
Boiler Feed Pumps

Germencik
Geothermal Power Plant
Capacity : 47 MW
5 Pumps incl.
Hotwell Pumps
The Germencik plant is the most advanced flashed-brine geothermal power plant ever built.




Izmir
Sewage Plant
22 Pumps incl.
Sewage Pumps



Ankara

IC Anadolu
Combined Cycle Power Plant
Capacity : 840 MW
10 Pumps incl.
HP/IP Feedwater Pumps

Afsin-Elbistan B
Coal-fired Power Plant
Capacity : 360 MW x 4
124 Pumps incl.
Boiler Feed Pumps



Denizli
Combined Cycle Power Plant
Capacity : 775 MW
8 Pumps incl.
Boiler Feed Pumps

Kizildere II
Geothermal Power Plant
Capacity : 80 MW
6 Pumps incl.
Hotwell Pumps
The largest geothermal power plant in Turkey.