



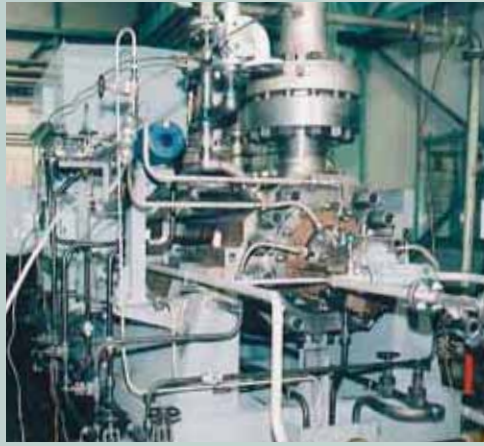
Taiwan

大潭發電廠
Dah Tarn Power Plant
 Capacity : 742 MW x 6
30 Pumps incl.
 Boiler Feed Pumps /
 Condensate Pumps

通霄發電廠
Tunghsiao Power Plant
 Capacity : 720 MW x 4
6 Pumps
 Boiler Feed Pumps

中龍鋼鐵股份有限公司
Dragon Steel
23 Pumps incl.
 Boiler Feed Pumps

台塑石化股份有限公司
Formosa Industrial Complex No.1
8 Pumps incl. Boiler Feed Pumps
Formosa Industrial Complex No.8
12 Pumps incl. Boiler Feed Pumps



台灣化學纖維股份有限公司
Formosa Chemical & Fibre LT1,2,3
14 Pumps incl.
 Boiler Feed Pumps

台灣化學纖維股份有限公司
Formosa Chemical & Fibre G6
2 Boiler Feed Pumps

台灣化學纖維股份有限公司
Formosa Chemical & Fibre SK4
2 Boiler Feed Pumps



南亞塑膠工業股份有限公司
Nan Ya Plastics
18 Pumps incl.
 Boiler Feed Pumps

林口發電廠
Linkou Power Plant
 Capacity : 800 MW x 3
36 Pumps incl. Boiler Circulation Pumps /
 Circulating Water Pumps / Flue Gas Desulfurization Pumps



興達發電廠
Hsinta Power Plant
 Capacity : 550 MW x 2
3 Pumps
 Reheater High Pressure Pumps

大林發電廠
Talin Power Plant
 Capacity : 800 MW x 2
8 Pumps incl. Boiler Circulation Pumps
 / Circulating Water Pumps

