



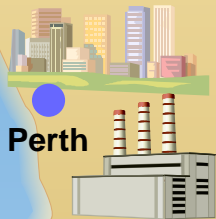
For Example

# Australia

Continuing drought since 2002 has been causing a serious water shortage crisis.



Dried-up lake by drought



Perth

**Bluewater Power Station**  
**28 pumps**

200MW



## Gold Coast Desalination Plant

R.O. system desalination plant

**16 pumps**

125,000 ton/d (equiv : 450 thousand people)



One of the world's largest high pressure seawater feed pumps

## Victorian Desalination Plant

R.O. system desalination plant

**36 pumps**

411,000 ton/d (equiv : 1,500 thousand people)



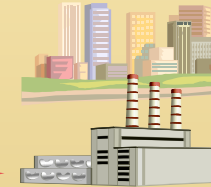
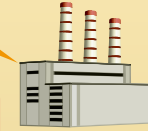
## Western Corridor Recycled Water Project

Waste water treatment plant

**7 pumps**

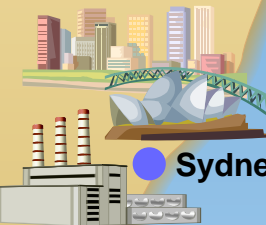
## Merrimac Waste Water Treatment Plant

**2 pumps**



Brisbane

Gold Coast

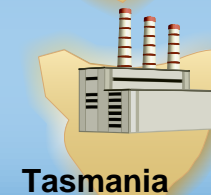


Sydney

Canberra



Melbourne



Tasmania

## Sydney Desalination Plant

R.O. system desalination plant

**5 pumps**

250,000 ton/d  
(equiv : 900 thousand people)

## Tamar Valley Power Station

**11 pumps**

200MW