

Consolidated Financial Results for FY2010

(April 1st 2010 ~ March 31st 2011)

Forecasts regarding future performance in these materials are based on judgment made in accordance with information available at the time this presentation was prepared. Therefore, please notice that there is a risk or uncertainty that the actual results may be different from these predicted results, depending on various factors.

May 2011

TORISHIMA PUMP MFG.CO.,LTD.

<http://www.torishima.co.jp>

Content

■ FY2010 Financial Results Outline	3
■ Business Domain	4
■ FY2010 Financial Results	5
Orders Received by Segment	6-7
Financial Summary by Segment	8
Orders Received by Area	9
Factor Analysis of the Increase and Decrease of Operating Income	10
■ Medium Term (FY2010-FY2012) Business Plan	11
■ Forecast for FY2011	12
■ Forecast for FY2011 by Segment	13
■ Amendment of Medium Term Business Plan	14
■ Forecast of Overseas Subsidiaries (Orders Received Basis)	15
■ Plan of Orders Received by Segment	16-18

FY2010 Financial Results Outline



(Billion yen)

	Result	vs. Previous FY	vs. Business Plan
Orders Received	33.0	-43.8%	73.3%
Sales	49.9[*]	+10.8%	99.8 %
Operating Income	3.1	-4.0%	94.8 %
Ordinary Income	3.7	-4.0%	108.2 %
Net Income	1.9	-27.5%	94.6 %

* Sales figure is the highest ever recorded.

- **Pump** : High-value-added pump available for various needs

Power generation plant,
Desalination plant,
Petro-chemical plant, etc.



- Wind power generation
- Maintenance of Wind power generation
- Mini & Micro hydro generation
- Sewage transfer and treatment
- Resource recycle

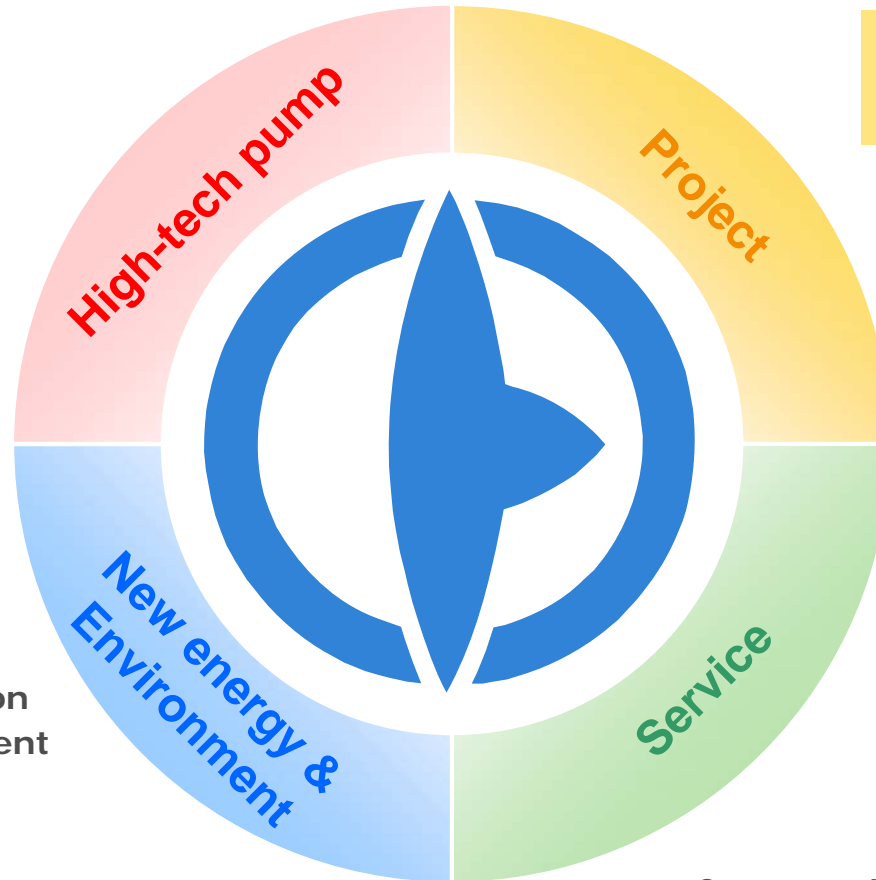


- **Supply EPC for Pumping Plant**

Full turn-key construction for tap water / Drainage, Irrigative facility etc..



- **Construction & repair facilities, Service, Maintenance, REDU (Re-Engineering and Design-Up) Total plant maintenance solutions**



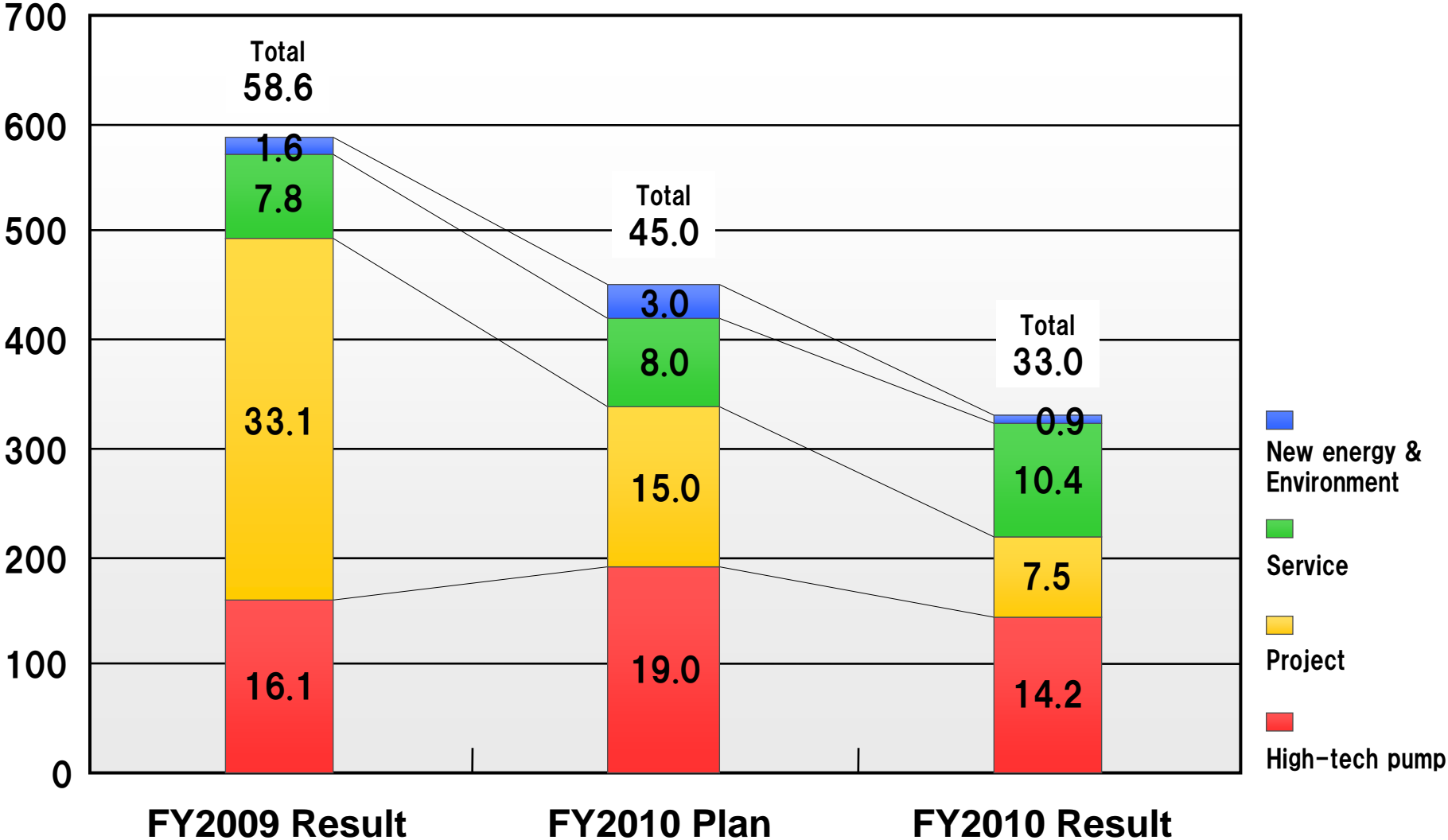
FY2010 Financial Results

Billion Yen

	FY2009	FY2010		
	Result	Plan	Result	vs. Previous FY
Orders Received	58.6	45.0	33.0	56.2%
Sales	45.0	50.0	49.9	110.8%
Order Backlog	64.1	59.1	47.2	73.6%
Operating Income	3.3 (7.2 %)	3.3 (6.6%)	3.1 (6.3%)	96.0%
Ordinary Income	3.8 (8.5 %)	3.4 (6.8%)	3.7 (7.4%)	96.0%
Net Income	2.6	2.0	1.9	72.5%

Orders Received by Segment

Billion Yen



Billion Yen

Orders Received by Segment

		FY2009 Result	FY2010	
			Result	vs. Previous FY
High-tech pump		16.1	14.2	Δ1.9
	Japan	2.5	2.3	Δ0.2
	Overseas	13.6	11.9	Δ1.7
Project		33.1	7.5	Δ25.6
	Japan	8.9	5.8	Δ3.1
	Overseas	24.2	1.7	Δ225
Service		7.8	10.4	+2.6
	Japan	6.1	6.0	Δ0.1
	Overseas	1.7	4.4	+2.7
New energy & Envi.		1.6	0.9	Δ0.7
Total		58.6	33.0	Δ25.6

Financial Summary by Segment

Billion Yen

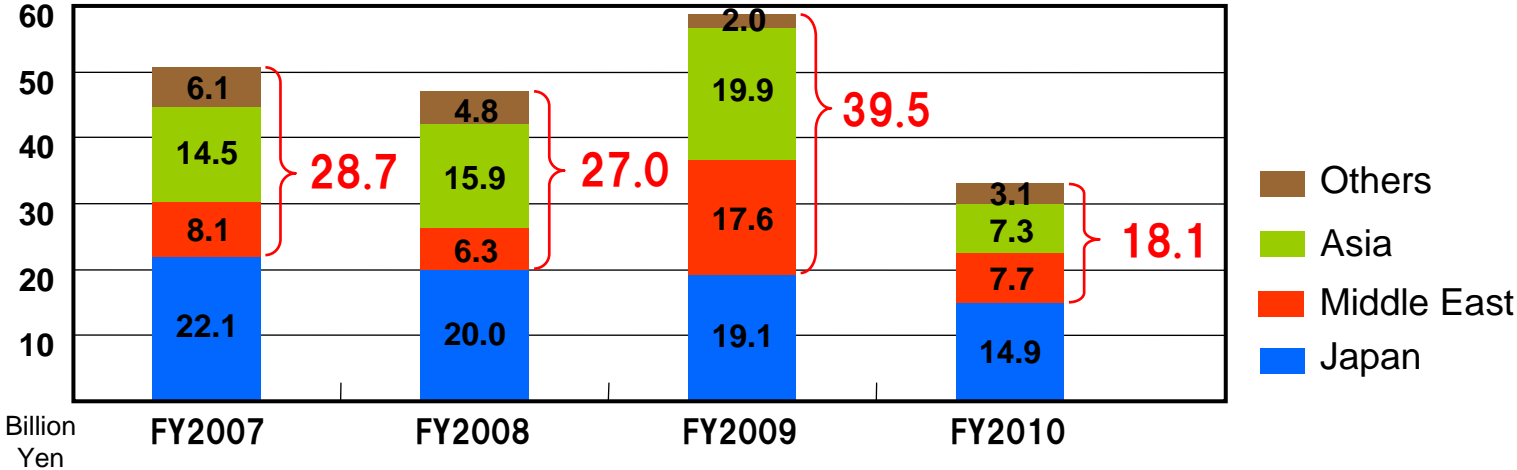
	FY2009 Result			FY2010 Result		
	Orders Received	Sales	Order Backlog	Orders Received	Sales	Order Backlog
High-tech pump	16.1	18.8	21.1	14.2	15.6	19.7
Project	33.1	17.1	36.7	7.5	21.1	23.1
Service	7.8	7.2	5.7	10.4	11.9	4.2
New energy & Environment	1.6	1.9	0.6	0.9	1.3	0.2
Total	58.6	45.0	64.1	33.0	49.9	47.2

Orders Received by Area

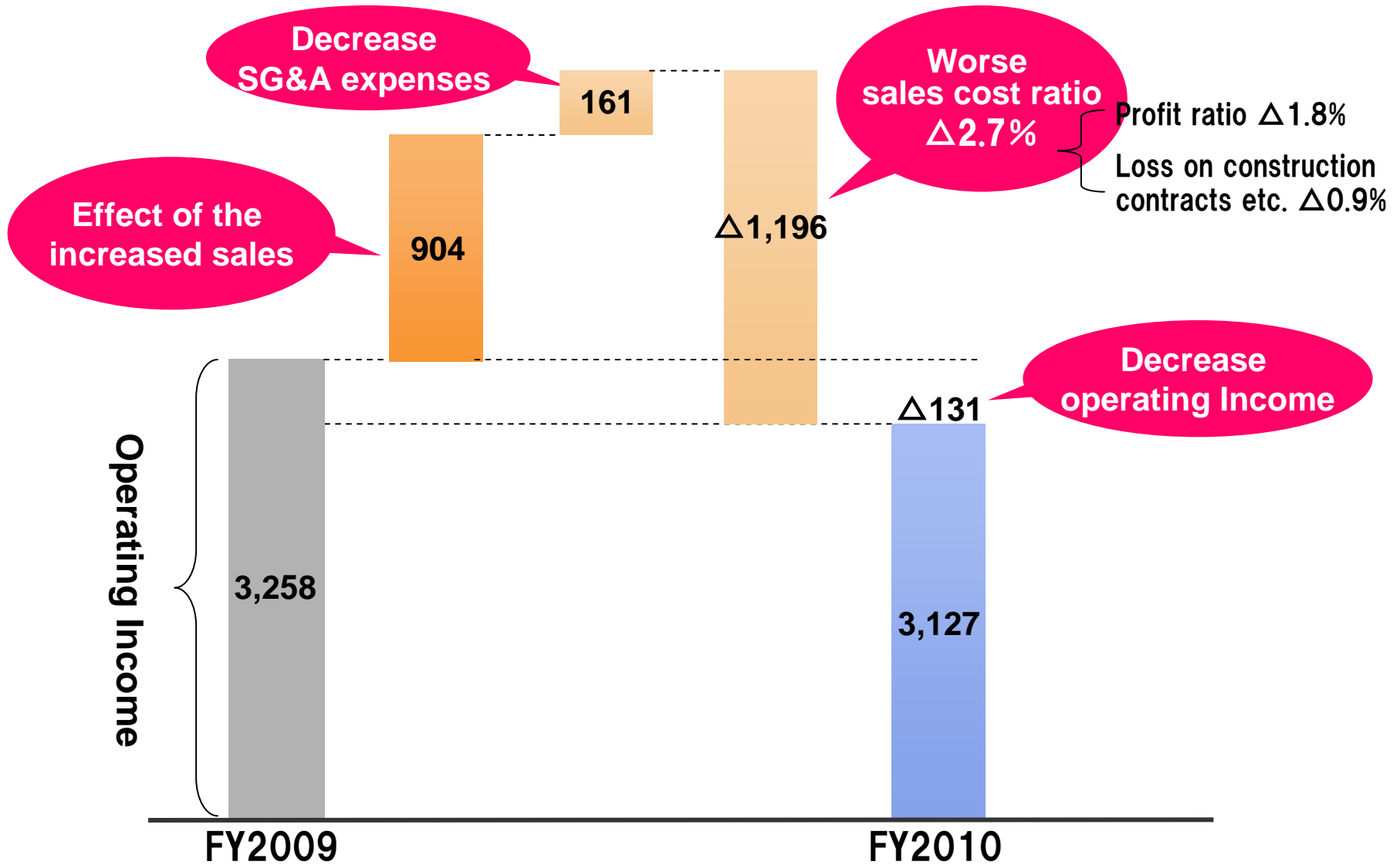


Billion Yen

		Japan	Overseas	Overseas Breakdown			Total
				Asia	Middle East	Others	
Orders Received (%:share)	FY2007	22.1 (43.6%)	28.7 (56.4%)	8.1 (15.9%)	14.5 (28.5%)	6.1 (12.0%)	50.8
	FY2008	20.0 (42.6%)	27.0 (57.4%)	6.3 (13.4%)	15.9 (33.8%)	4.8 (10.2%)	47.0
	FY2009	19.1 (32.6%)	39.5 (67.4%)	17.6 (30.0%)	19.9 (33.4%)	2.0 (1.3%)	58.6
	FY2010	14.9 (45.2%)	18.1 (54.8%)	7.3 (22.0%)	7.7 (23.3%)	3.1 (9.4%)	33.0



Factor Analysis of the Increase and Decrease of Operating Income



1. Super Eco Strategy

: focus on saving energy, developing renewable energies and responding to environmental needs

2. Loyal Customer Strategy

: stronger service operations

3. Global Strategy

: targeting a customer network spanning the globe

Forecast for FY2011

Billion Yen

	FY2010 Result	FY2011 Plan	vs. Previous FY
Orders Received	33.0	50.0	+51.6%
Sales	49.9	55.0	+10.3%
Operating Income	3.1	3.0	Δ4.1%
Ordinary Income	3.7	3.2	Δ12.9%
Net Income	1.9	1.9	+0.4%

Forecast for FY2011 by Segment

Billion Yen (% : vs. Previous FY)

	FY2010 Result			FY2011 Plan		
	Orders Received	Sales	Order Backlog	Orders Received	Sales	Order Backlog
High-tech pump	14.2	15.6	19.7	20.0 (+41%)	20.0 (+28%)	19.7
Project	7.5	21.1	23.2	15.0 (+100%)	20.0 (Δ5%)	18.2
Service	10.4	11.9	4.2	14.0 (+35%)	14.0 (+18%)	4.2
New energy & Environment	0.9	1.3	0.2	1.0 (+11%)	1.0 (Δ23%)	0.2
Total	33.0	49.9	47.2	50.0 (+52%)	55.0 (+10%)	42.2

Amendment of Medium Term Business Plan



Billion Yen

	FY2010		FY2011		FY2012 Plan (No amendment)
	Plan	Result	Original Plan	Amendment Plan	
Orders Received	45.0	33.0	55.0	50.0	60.0
Sales	50.0	49.9	55.0	55.0	60.0
Operating Income	3.3	3.1	3.5	3.0	4.5
Ordinary Income	3.4	3.7	3.6	3.2	4.6
Net Income	2.0	1.9	2.2	1.9	2.8

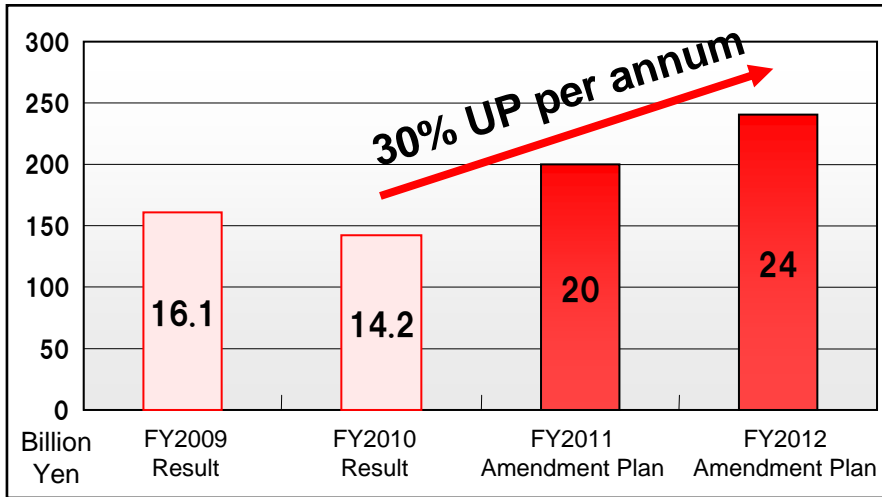
Forecast of Overseas Subsidiaries (Orders Received Basis)

Major Overseas Subsidiaries by Area		FY2010 Orders Received Result	FY2011 Orders Received Plan	FY2012 Orders Received Plan
Europe	KRG (Manufacturing) TSSE (Service)	1.1	2.5	3.0
Middle East	TSS (Service)	0.3	2.0	2.5
Asia	TGI/GTK (Manufacturing) TGE (Service) Hong Kong (Project) Tian Jin (Manufacturing)	0.4	6.0	8.0
Total		1.8	10.5	13.5



Plan of Orders Received by Segment

● High-tech pump



○ Introduction of Product Manager System

○ Strengthening R&D

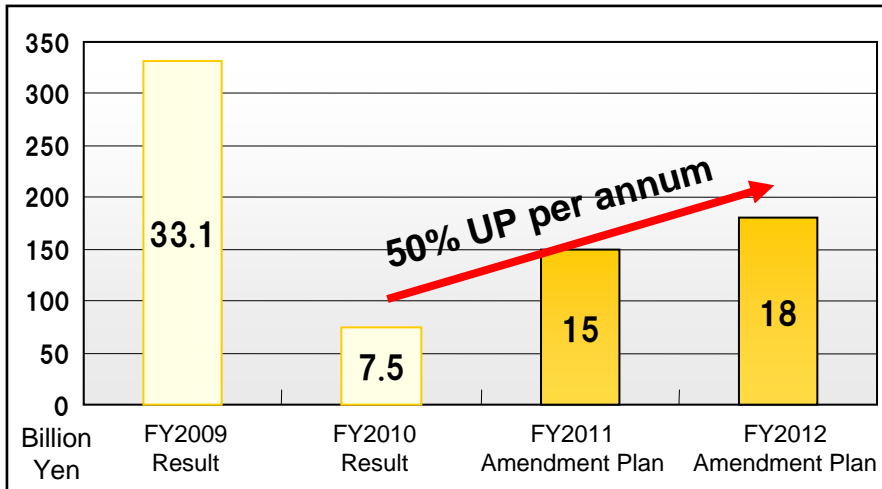
○ Expanding Eco-pump Sales

○ Boosting Cost Competitiveness

- Overseas factories (Tianjin China, TGI, KRG)
- Japan (Reconstruction of 2nd factory in HQ)

○ Focus on India market

● Project



○ Expanding orders received in new region in addition to established region.

- U.A.E., Qatar, H.K. Vietnam
- + new region; Saudi Arabia, Europe

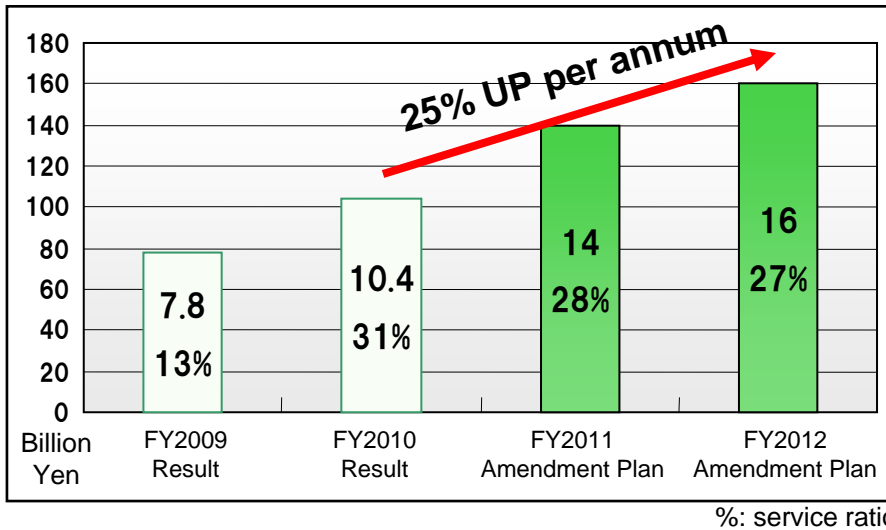
○ Expanding share of domestic public demand

- Suggestion activities to meet clients' needs

○ Enhanced Risk Management

Plan of Orders Received by Segment

● Service



○ Proceeding 4 service network (HQ, TGE, TSS, TSSE) centering on HQ

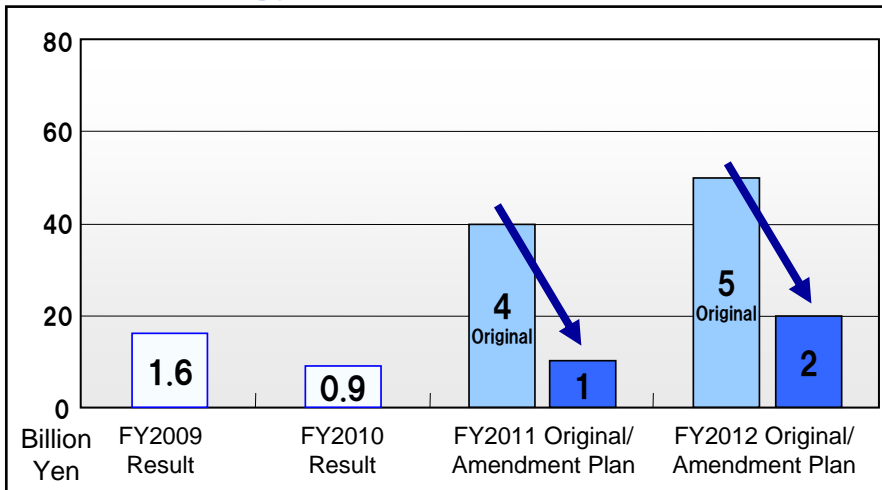
○ TGE (Asia, Oceania)

- Consolidated subsidiary by capital increase in Dec. 2010 (US\$0.6million → \$5.2million)
- Continuous training of field engineers

○ TSS (Middle East, Africa)

- New construction of service factory

● New energy & Environment



○ Shift of operation partially to non-consolidated subsidiary

- 49% Investment to EOS Engineering Service Co., Ltd. (EES) in Sep. 2010

EES outline

Employee: 70 people as of Mar. 2010

Paid in capital: ¥90million (Japan Wind Development Co., Ltd. 51%)

Business activity: maintenance and service of wind power generation system

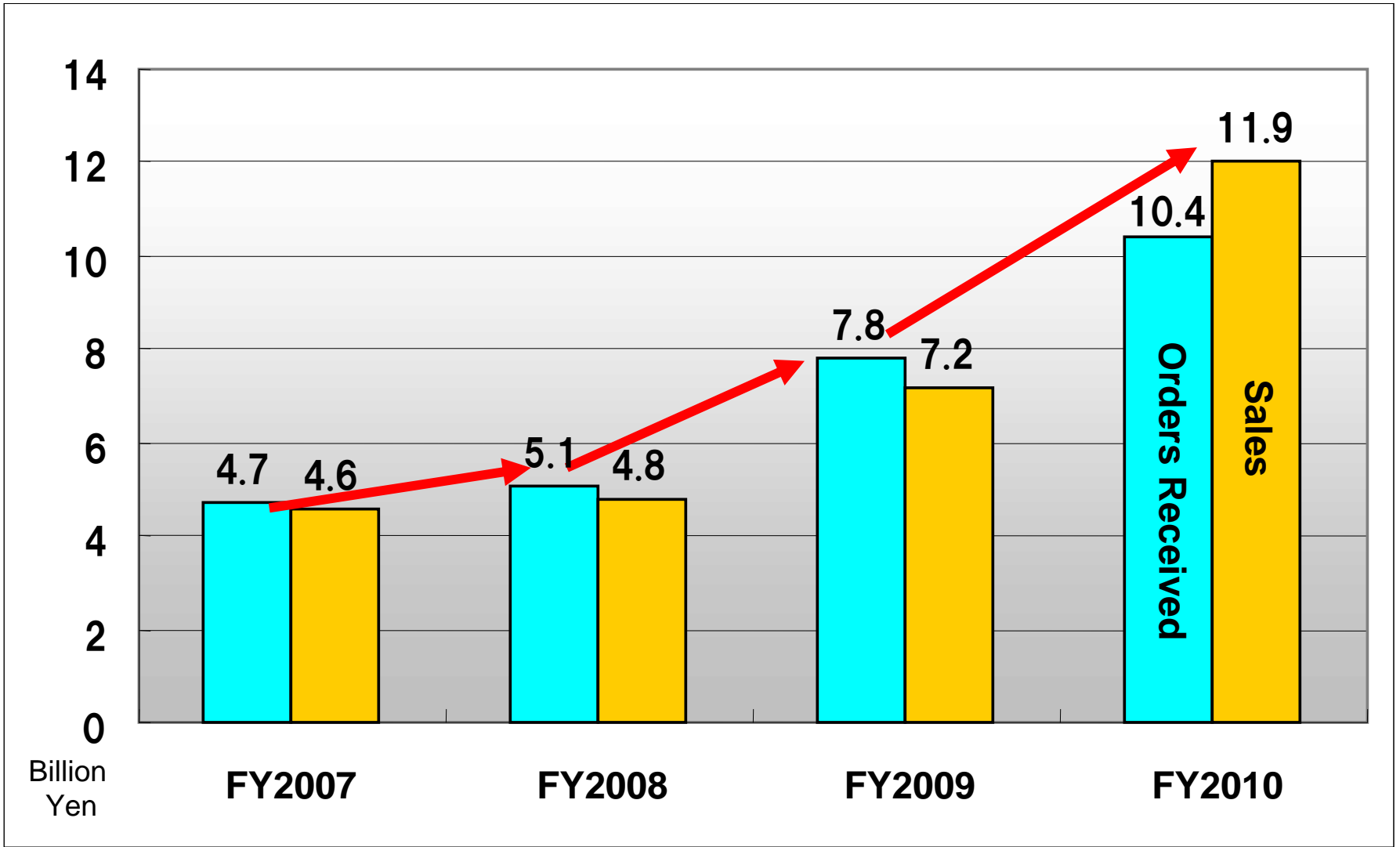
Billion Yen

Plan of Orders Received by Segment

	FY2009 Result	FY2010 Result	FY2011 Amendment Plan	FY2012 Amendment Plan
High-tech pump	16.1	14.2	20.0	24.0
Project	33.1	7.5	15.0	18.0
Service	7.8	10.4	14.0	16.0
New energy & Environment	1.6	0.9	1.0	2.0
Total	58.6	33.0	50.0	60.0

Reference Data

Trends in Orders Received and Sales in Service Sector

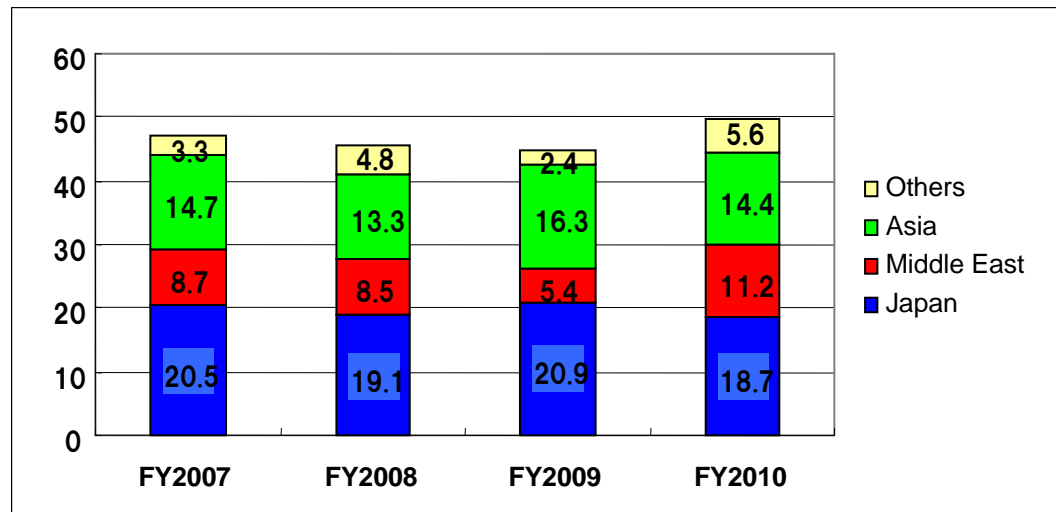


Results by Demand Sectors

		FY2009			FY2010		
		Orders Received	Sales	Order Backlog	Orders Received	Sales	Order Backlog
Public		14.6	15.5	10.3	10.0	13.8	6.5
	Change	-1.7%	+9.7%	-7.9%	-31.6%	-11.0%	-36.7%
Private		4.5	5.4	2.5	4.9	4.9	2.5
	Change	-13.8%	+8.8%	-27.7%	+9.0%	-9.6%	-0.9%
Overseas		39.5	24.1	51.3	18.1	31.2	38.2
	Change	+46.9%	-9.3%	+43.1%	-54.3%	+29.5	-25.5%
Total		58.6	45.0	64.1	33.0	49.9	47.2
	Change	+24.8%	-1.5%	+27.0%	-43.8%	+10.8%	-26.4%

Sales Breakdown by Area (End-user Location)

		Japan	Overseas Total	Overseas Breakdown			Total
				Asia	Middle East	Others	
Sales (% : Share)	FY2007	20.5 (43.4%)	26.7 (56.6%)	8.7 (18.5%)	14.7 (31.1%)	3.3 (7.0%)	47.3
	FY2008	19.1 (41.9%)	26.6 (58.1%)	8.5 (18.5%)	13.3 (29.2%)	4.8 (10.4%)	45.7
	FY2009	20.9 (46.5%)	24.1 (53.5%)	5.4 (12.0%)	16.3 (36.1%)	2.4 (5.4%)	45.0
	FY2010	18.7 (37.5%)	31.2 (62.5%)	11.2 (22.5%)	14.4 (28.8%)	5.6 (11.2%)	49.9



Plan of Orders Received by Segment (Japan and Overseas)

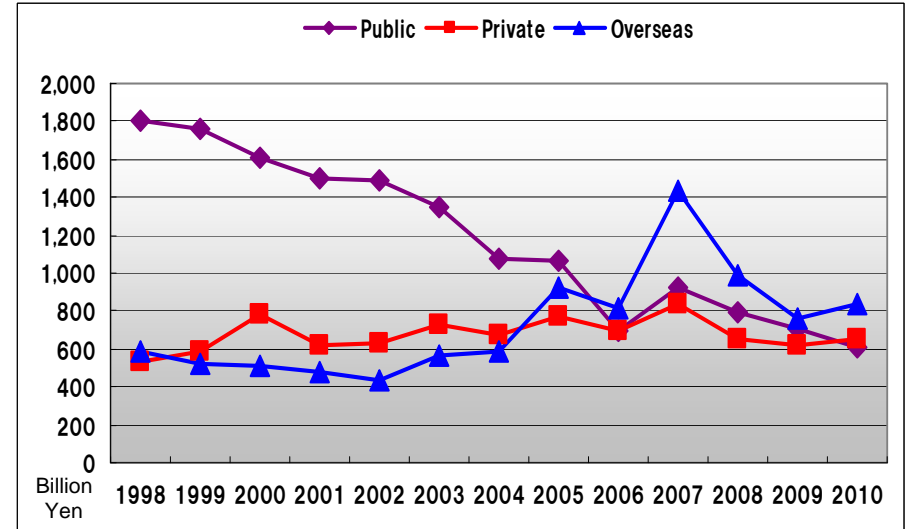
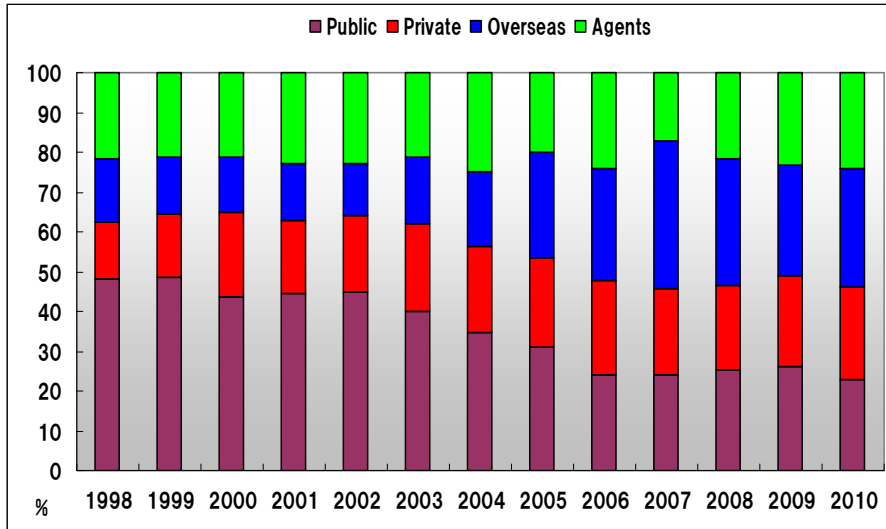
		FY2010 Result	FY2011 Amendment Plan	FY2012 Amendment Plan
High-tech pump		14.2	20.0	24.0
	Japan	2.3	5.0	6.0
	Overseas	11.9	15.0	18.0
Project		7.5	15.0	18.0
	Japan	5.8	8.0	9.0
	Overseas	1.7	7.0	9.0
Service		10.4	14.0	16.0
	Japan	6.0	6.0	7.0
	Overseas	4.4	8.0	9.0
New energy & Environment		0.9	1.0	2.0
Total		33.0	50.0	60.0
	Japan	15.0	20.0	24.0
	Overseas	18.0	30.0	36.0

Trends in Financial Data

	FY2007		FY2008		FY2009		FY2010	
Gross Profit Margin (%)	17.5		18.8		21.2		18.6	
Operating Profit Margin (%)	5.6		6.0		7.2		6.3	
ROA (Ordinary Profit /Total Asset) (%)	4.0		5.5		6.0		6.0	
ROE (%)	5.2		8.0		9.5		6.1	
Free Cash Flow (Billion Yen)	3.1		△0.9		1.4		0.7	
Dividend Ratio (%)	41.9		38.6		47.2		50.3	
Dividend (Yen/share)	7	8	8	9	9	9+2*	9	9
	15		17		20		18	
Capital Ratio (%)	27.4		22.0		20.0		26.7	

*Dividend of ¥2 for the 90th anniversary of the foundation in FY2010

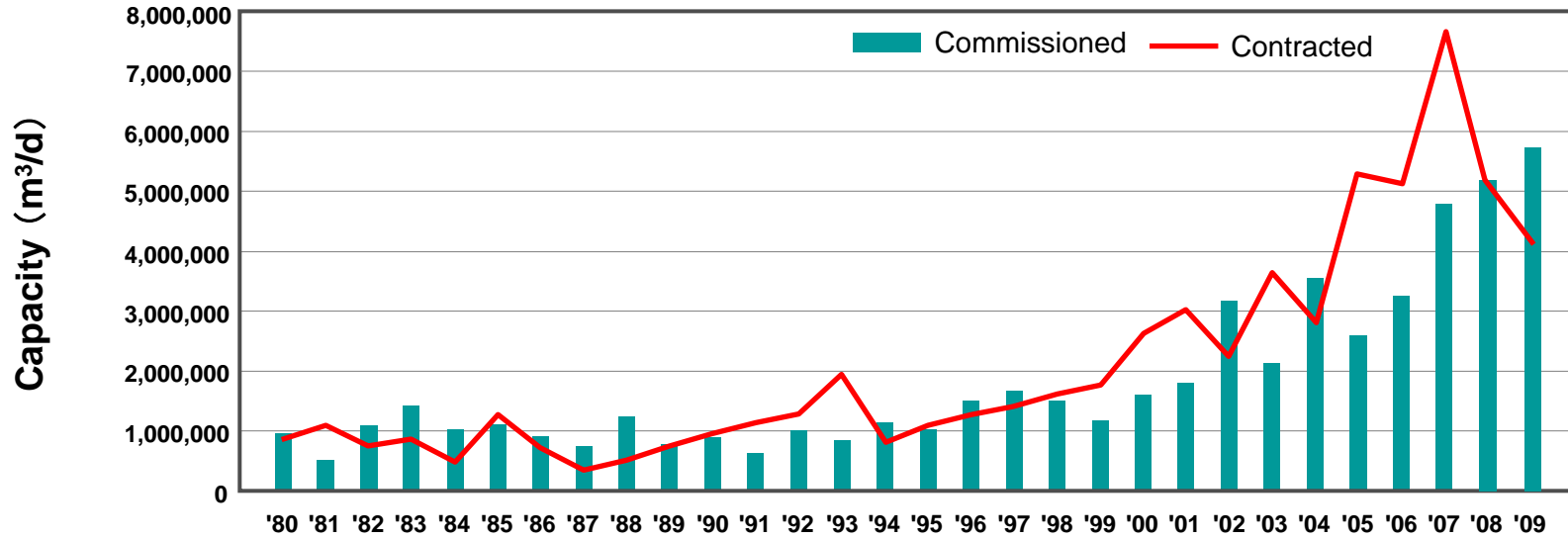
Trends in Orders Received by Demand Sectors in Japan's Pump Market



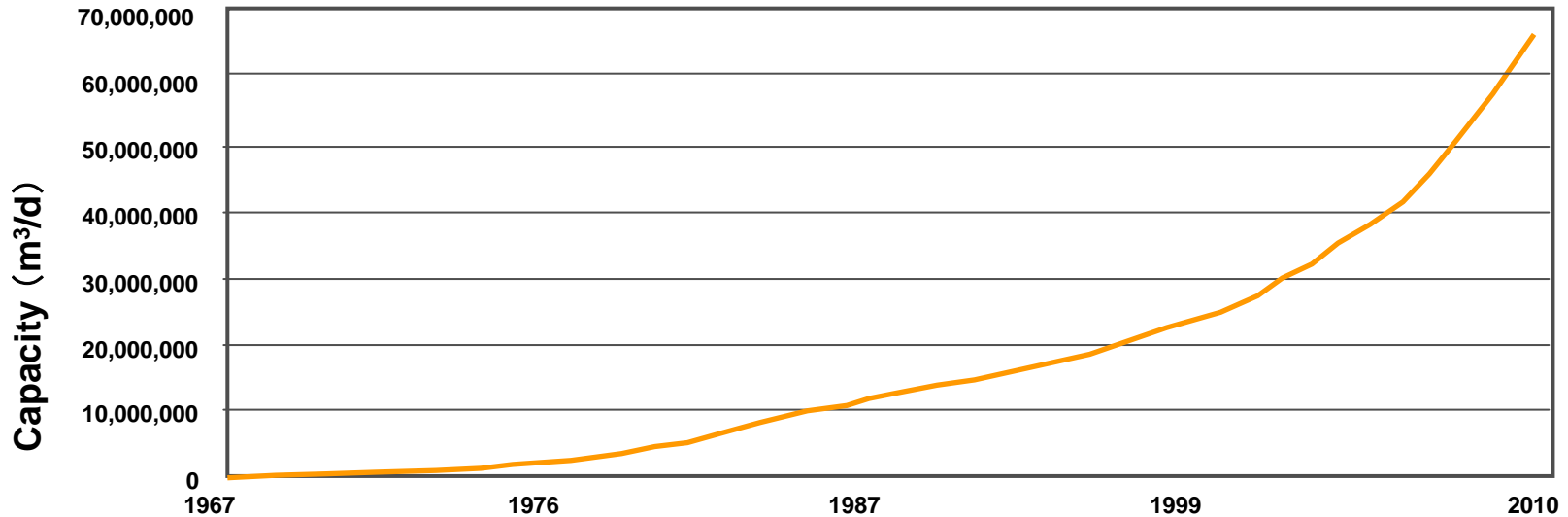
Demand Sectors		1998	1999	2000	2001	2002	2003	2004	2005	2006	2007	2008	2009	2010
Public	Price	180,337	176,337	160,550	149,806	148,831	134,685	107,124	106,948	69,504	92,722	79,096	70,999	61,305
	Share (%)	48.2	48.4	43.7	44.5	44.9	40.1	34.5	30.9	23.9	24.1	25.4	26	22.4
Private	Price	53,878	58,396	77,895	61,733	63,572	73,130	67,732	77,537	69,286	84,067	65,471	62,051	64,668
	Share (%)	14.4	16.	21.2	19.2	19.2	21.8	21.8	22.4	23.8	21.9	21.	22.8	23.6
Overseas	Price	59,055	52,766	50,737	48,032	43,247	56,846	58,578	92,770	81,919	143,535	99,326	76,108	83,883
	Share (%)	15.8	14.5	13.8	14.3	13.1	16.9	18.9	26.8	28.1	37.2	31.9	27.8	30.6
Agent	Price	81,143	76,961	78,116	76,978	75,608	71,500	77,030	68,459	70,310	65,315	67,590	64,338	64,080
	Share (%)	21.7	21.1	21.3	22.9	22.8	21.3	24.8	19.8	24.2	16.	21.7	23.5	23.4
Total	Price	374,413	364,460	367,298	336,549	331,258	336,161	310,464	345,714	291,019	385,639	311,483	273,496	273,936
	Share (%)	100	100	100	100	100	100	100	100	100	100	100	100	100

Reference : The Japan Society of Industrial Machinery Manufacturers

Annual New Contracted and Commissioned Capacity



Global Installed Desalination Capacity



Reference: IDA DESALINATION 「Year Book」2010-2011

Torishima Global Network



TORISHIMA SERVICE SOLUTIONS EUROPE LTD (TSSE)

(Sales, Engineering, Service)
Established in May. 2010

TORISHIMA EUROPE LTD

(Sales, Engineering, Service)
Established in Apr. 2008

TORISHIMA INDIA
(Sales, Engineering, Service)
Established in Apr. 2011

TORISHIMA BEIJING OFFICE

(Sales, Engineering, Service)
Established in Jul. 2006

TORISHIMA TIANJIN

(Production, Sales, Engineering & Service)
Established in July 2009

TORISHIMA U.S.A OFFICE

(Sales, Service)
Established in Feb. 2003

TORISHIMA (HONG KONG) LIMITED

(Sales, Engineering, Service)
Established in Oct. 1994

TORISHIMA MADRID OFFICE (SPAIN)

(Sales, Engineering, Service)
Established in Jan. 2010

TORISHIMA VIETNAM OFFICE

(Sales, Engineering, Service)
Established in Dec. 2003

TORISHIMA QATAR PROJECT OFFICE

(Engineering, Service)
Established in May 2006

TORISHIMA MALAYSIA SDN.BHD.

(Sales, Engineering, Service)
Established in May 2001

TORISHIMA MIDDLE EAST OFFICE

(Abu Dhabi / U.A.E.)
(Sales, Engineering, Service)
Established in Sep. 2002

TORISHIMA INDONESEA

- P.T.GETEKA FOUNINDO (Foundry Factory)
Established in Mar. 1991
- P.T.TORISHIMA GUNA INDONESIA
(Machining, Assembling Factory)
Established in Feb. 1984

TORISHIMA SINGAPORE OFFICE

(Sales, Engineering, Service)
Established in Jan. 1979

TORISHIMA SERVICE SOLUTIONS FZCO (TSS)

(Sales, Engineering, Service)
Established in Dec, 2009

P.T.TORISHIMA GUNA ENGINEERING (TGE)

(Sales, Engineering, Service) Established in Jan. 1999

TORISHIMA PUMP MFG. CO., LTD.

Torishima Pump Contract Record in Overseas





For Example **Kuwait**

For 30 years, Torishima Pumps have been supplied in Kuwait!



Doha West II
Seawater Desalination Plant (1985)
Torishima pumps : 13 units
Capacity : 392,400 m³/day
(equiv : 1,000,000 people)

Doha East
Power Plant (1976)
Torishima pumps : 17 units
Capacity : 150 MW x 3 units

Sabiya I & II
Seawater Desalination Plant (2006)
Torishima pumps : 43 units
Capacity : 227,100 m³/day
(equiv : 600,000 people)

Sabiya III
Seawater Desalination Plant (2007)
Torishima pumps : 32 units
Capacity : 227,100 m³/day
(equiv : 600,000 people)

Sabiya
Power Plant (1996)
Torishima pumps : 135 units
Capacity : 300 MW x 8 units

Shuwaikh C
Seawater Desalination Plant (1979)
Torishima pumps : 39 units
Capacity : 81,810 m³/day
(equiv : 220,000 people)

Shuwaikh RO
Seawater Desalination Plant (2010)
Torishima pumps : 57 units
Capacity : 136,260 m³/day
(equiv : 360,000 people)

Shuaiba Puming Station C
Cooling water pumps for Oil Refinery Plant (2008)
Torishima pumps : 14 units

Equate Olefin 2
Cooling water pumps for Oil Refinery Plant (2008)
Torishima pumps : 12 units

Az Zour South Phase I
Seawater Desalination Plant (1986)
Torishima pumps : 40 units
Capacity : 261,600 m³/day
(equiv : 690,000 people)

Az Zour South Phase II
Seawater Desalination Plant (1996)
Torishima pumps : 48 units
Capacity : 109,100 m³/day
(equiv : 290,000 people)

Az Zour South Phase III
Seawater Desalination Plant (2000)
Torishima pumps : 30 units
Capacity : 130,920 m³/day
(equiv : 340,000 people)

Iraq

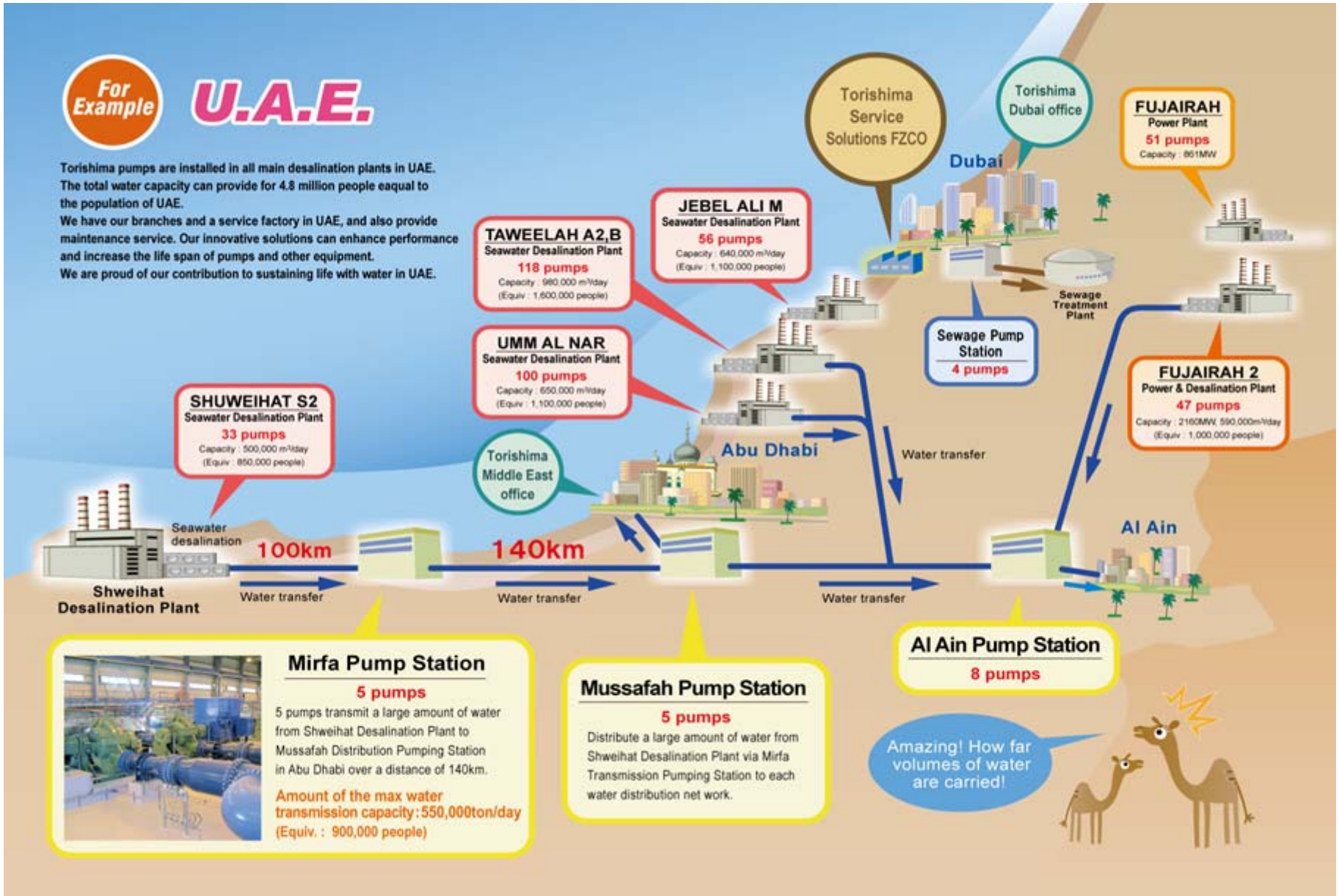
Iran

Kuwait

Saudi Arabia

For Example U.A.E.

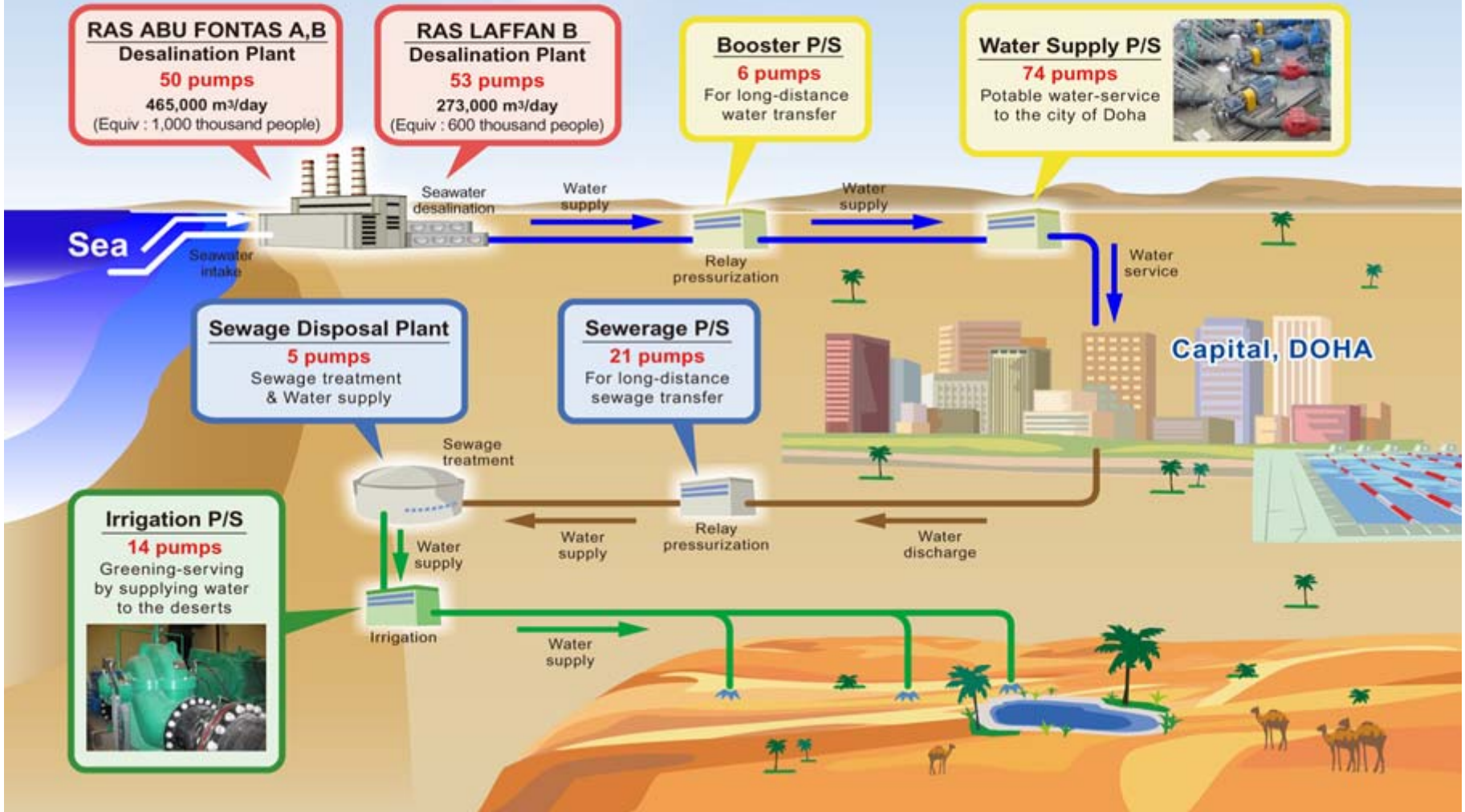
Torishima pumps are installed in all main desalination plants in UAE. The total water capacity can provide for 4.8 million people equal to the population of UAE. We have our branches and a service factory in UAE, and also provide maintenance service. Our innovative solutions can enhance performance and increase the life span of pumps and other equipment. We are proud of our contribution to sustaining life with water in UAE.



Amazing! How far volumes of water are carried!



For Example **Qatar** TORISHIMA PUMPS support whole sustainable water supply system



For Example

Hong Kong

There is not enough water to supply the population of 7 million in Hong Kong. 70 percent of the water demand is imported from China. The precious resources is carried to each pump station by Torishima Pumps then flowed into the residents and commercial facilities throughout the country. Torishima Pumps have a significant role in sewage treatment as well.

深圳 (中国)
(Shenzhen)

Muk Wu 'C' Water Transmission P/S

12 Pumps

The gateway pumping station for drinking water of Hong Kong, located in the border between Northern Hong Kong and Shenzhen China. The water is transmitted to downstream water treatment plants and pumping stations and brought to the residents.

surge tank

Here are TORISHIMA Pumps!

Hong Kong's skyscrapers

Stainless-steel feed pump for building facility

Stonecutters Island Main Sewage P/S

8 Pumps

The most important pumping station for improving the environment of Hong Kong that almost all sewage water in Kowloon and Eastern Hong Kong Island is taken into Stonecutters Island through the underground tunnels and treated at one place.

Tai Po Tau Water Supply Pumping Complex

13 Pumps

The biggest water supply pumping complex in Hong Kong consisting of 4 pumping stations in the main route from Muk Wu 'C' pumping station.

Lamma Power Station
Gas & Coal-fired Power Plants

53 Pumps

Capacity : 3,736MW

Torishima Pump is a vital component in Hong Kong's lifeline!

Main Water Supply P/S
 Main Sewage P/S

For Example **Australia**

Australia has magnificent nature like Great Barrier Reef and Ayers Rock, but continuing drought since 2002 has been causing a serious water shortage crisis. Torishima pumps are operating night and day in seawater desalination, power and waste water treatment plants in order to support Australian abundant life environment.



Dried-up lake by drought



Perth

Bluewater Power Station
29 pumps
200MW

Gold Coast Desalination Plant
R.O. system desalination plant
16 pumps
133,000 m³/d (equiv : 450 thousand people)

One of the world's largest high pressure seawater feed pumps

Kogan Creek Power Station
1 pump
750MW

Western Corridor Recycled Water Project
Waste water treatment plant
7 pumps

Merrimac Waste Water Treatment Plant
2 pumps

Victorian Desalination Plant
R.O. system desalination plant
36 pumps
411,000 m³/d (equiv : 1,500 thousand people)

Sydney Desalination Plant
R.O. system desalination plant
5 pumps
250,000 m³/d (equiv : 900 thousand people)

Tamar Valley Power Station
11 pumps
200MW

