

Bangladesh

**Dhaka Water Supply and
Sewerage Authority**
Raw Water Pumps
(SPV600)
5 Pumps



**Dhaka Sugar Ltd
(City Group)**
Condensate Pumps
(MMK-E-125/3)
2 Pumps

**U.K. Bangla Paper Ltd
(City Group)**
Condensate Pumps
(MMK-E-125/3)
2 Pumps

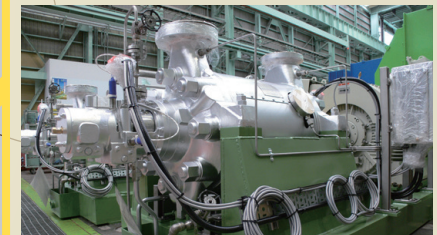
Ghorasal Polash Urea Fertilizer
Cooling Water Pumps etc.
(CDM1100x1000 etc.)
8 Pumps



**Dhaka Salt & Chemical
(City Group)**
Condensate Pumps
(MMK-E-125/3)
2 Pumps

United Sugar Mills Ltd
Cooling Water Pumps
(CDM500x450IA)
3 Pumps

Kharnapuri Paper Mills
Boiler Feed Pumps
(MHD100/5E etc.)
4 Pumps



**Ghorashal 365MW
Combined Cycle Power**
Boiler Feed Pumps
(MHG4/9)
3 Pumps



North-West Power Generation
Water Injection Pumps
(MHD80/9F etc.)
3 Pumps



India

**Bangladesh-India
Friendship
Power (Maitree)**
Boiler Circulation Pumps
(HLAV250-360/1K)
3 Pumps



**Coal Power Generation
Company Bangladesh**
Boiler Circulation
Pumps etc.
(HLAV200-315/1K etc.)
8 Pumps



Myanmar

Chittagong Urea Fertilizer
Filtered Pumps etc.
(CPCS250-40 etc.)
35 Pumps

