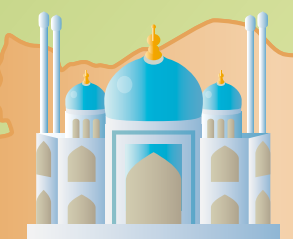




# Turkey

Bulgaria

Greece



**Zetes**  
Coal-fired Power Plant  
Capacity : 160 MW + 600 MW x 2  
**19 Pumps** incl.  
Main Cooling Water Pumps

**Samsun**  
Combined Cycle Power Plant  
Capacity : 870 MW  
**8 Pumps**  
Closed Circuit Cooling Water Pump

**Bekirli**  
Coal-fired Power Plant  
Capacity : 600 MW x 2  
**3 Pumps**  
Main Cooling Water Pumps

**Cayirhan 3&4**  
Coal-fired Power Plant  
Capacity : 150 MW x 2  
**30 Pumps** incl.  
Raw Water Pumps

**Kangal**  
Coal-fired Power Plant  
Capacity : 450 MW  
**31 Pump** incl.  
Boiler Feed Pumps

**Germencik**  
Geothermal Power Plant  
Capacity : 162 MW  
**16 Pumps** incl. Hotwell Pumps,  
Brine Injection Pumps  
The Germencik plant is  
the most advanced flashed-brine  
geothermal power plant ever built.

**Izmir**  
Sewage Plant  
**22 Pumps** incl.  
Sewage Pumps



**IC Anadolu**  
Combined Cycle Power Plant  
Capacity : 840 MW  
**10 Pumps** incl.  
HP/IP Feedwater Pumps

**Afsin-Elbistan B**  
Coal-fired Power Plant  
Capacity : 360 MW x 4  
**124 Pumps** incl.  
Boiler Feed Pumps



**Denizli**  
Combined Cycle Power Plant  
Capacity : 775 MW  
**8 Pumps** incl.  
Boiler Feed Pumps

**Kizildere II , III**  
Geothermal Power Plant  
Capacity : 80 MW  
**22 Pumps** incl.  
Hotwell Pumps,  
Brine Injection Pumps and  
Binary Circulating Water Pumps



Syria