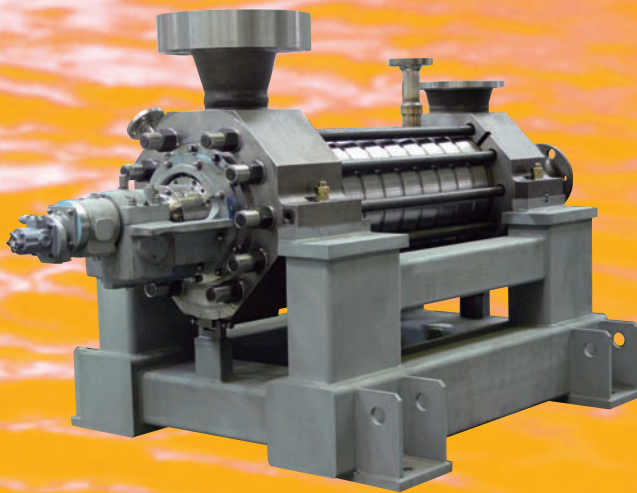


MHG / MHB

High Pressure Multi-Stage Diffuser Pump



MHG



MHB

High Pressure Multi-Stage Diffuser Pump

- Highly efficient hydraulic components
- Providing industries (such as power plant) with our reliable pump solutions, backed by our well-established manufacturing and quality management experience
- Providing a wide range of useful pump types, suitable for various applications from mid-range to high-end (for example, conventional, combined cycle and supercritical pressure power generation)
- Reduced cost and quick delivery achieved by part standardization and excellent stock management

Applications

Boiler Feed Pumps (Conventional, Combined Cycle, Coal-Fired, etc.)

Descaling Pumps

Oil Refinery, Chemical Plants

High Pressure Pumps for General Industry

Snowmakers

MHG Ring-Section Type

Low-priced, space-saving and light-weight.

Reliable casing sealing is achieved using metal-to-metal contact or O-rings securely fastened using tie bolts.

No warming of casings is required (except for some applications), making the product suitable for rapid start-up.

MHB Barrel Type

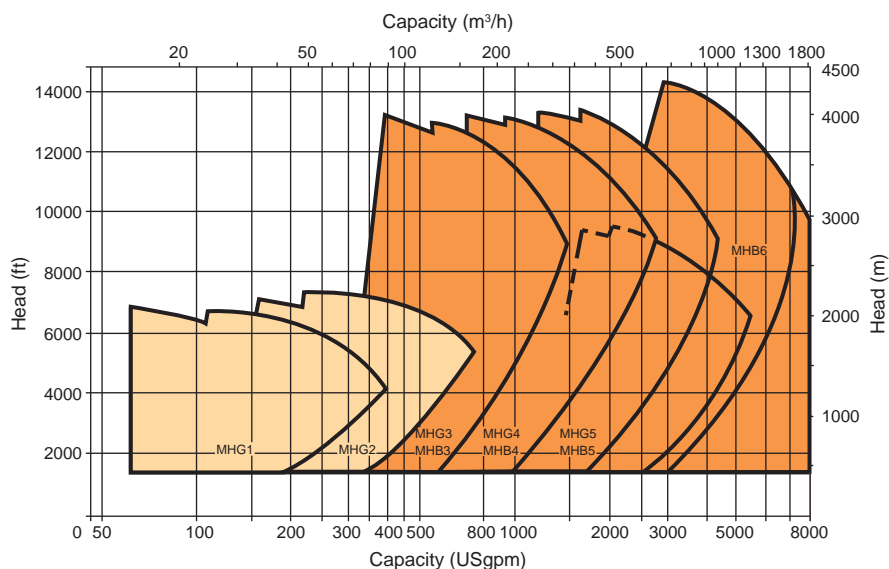
Highly-reliable double shell casings.

Maintenance time is shorter due to inner cartridges that are replaceable without dismantling the nozzle.

Customized designs are available with various nozzle orientations and high suction pressures.

Capacity	Standard : 1,440m ³ /h (6,340USgpm) Tailor made : up to 2,000m ³ /h (8,800USgpm)
Total Head	up to 4,200m (13,800ft)
Temperature	up to 200°C (392°F)
Suction Pressure	up to 3MPa (435psi)
Discharge Pressure	up to 42MPa (6,090psi)
Speed	up to 7,000min ⁻¹

Performance Range



Design Features

MHB Barrel Type

Radial Bearings and Housings

- Roller bearing or sleeve journal bearing (oil ring or forced lubrication) used depending on the size
- Various accessories including thermometer and vibration sensor available
- Robust shaft arrangement satisfying ISO 10816-7 vibration standard

Flanges and Pipe Connections

- Twice the allowable nozzle forces and moments required by API 610
- Nozzle connections conforming to major international standards, such as ASME flanges, as well as direct butt welding to plant nozzles (also available: suction from bottom, etc.)
- Intermediate extraction nozzles available from any stage

Impeller and Diffuser

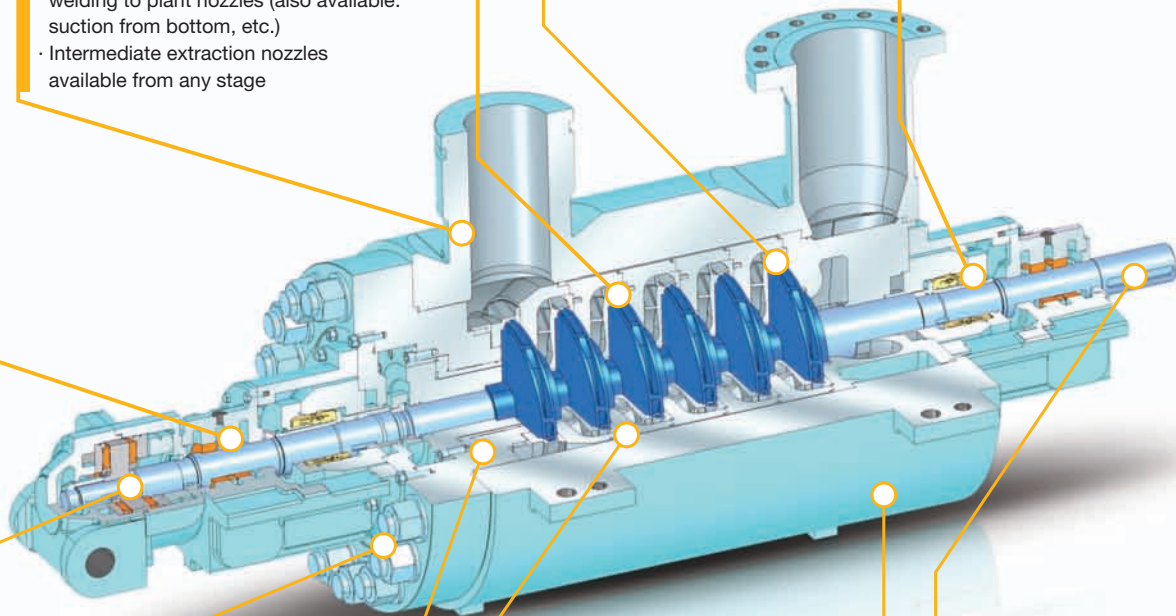
- Reduction in power consumption and CO₂ emission achieved by highly efficient hydraulic components
- Reliable performance and quality realized by precision-cast stainless steel impeller

First-stage Impeller

- Specialized first-stage impeller available for accommodating severe suction conditions

Shaft Sealing

- Minimized leakage and maintenance ensured by using reliable Torishima mechanical seals as standard equipment
- Cartridge mechanical seals, mechanical seals from other manufacturers, and gland packings optionally available



Assembly and Disassembly

- Specialized jig for replacing inner cartridges is included as a standard accessory

Maintenance and Repair

- Wear rings, impellers, and guide vanes kept in stock to offer quick part delivery

Driver

- In addition to standard direct motor drive, variable speed operation driven by a turbine, an engine or by a motor via hydraulic coupling is also available

Thrust Bearing

- No need for thrust bearing for standard (balancing disc sheet type) products; lifting device also available
- Tilting pad thrust bearing available for balancing piston (balancing drum) type
- Oil pump also available on NDE

Balancing Devices

- Balancing devices reduce axial thrust; choice of balancing disc sheet type and balancing piston type depending on the start-up/shut-down frequency
- Bearings, shaft sealing and balancing devices can be replaced and inspected without dismantling inner cartridges

Casings

- Double shell barrel casing for high reliability and easy maintenance (shortened overhaul time achieved by inner cartridge replacement)

Design Features

MHG Ring-Section Type

Radial Bearings and Housings

- Roller bearing or sleeve journal bearing (oil ring or forced lubrication) used depending on the size
- Various accessories including thermometer and vibration sensor available
- Robust shaft arrangement satisfying ISO 10816-7 vibration standard

Flanges and Pipe Connections

- Twice the allowable nozzle forces and moments required by API 610
- Flanges conforming to major international standards, such as ASME
- Intermediate extraction nozzle available from any stage

Impeller and Diffuser

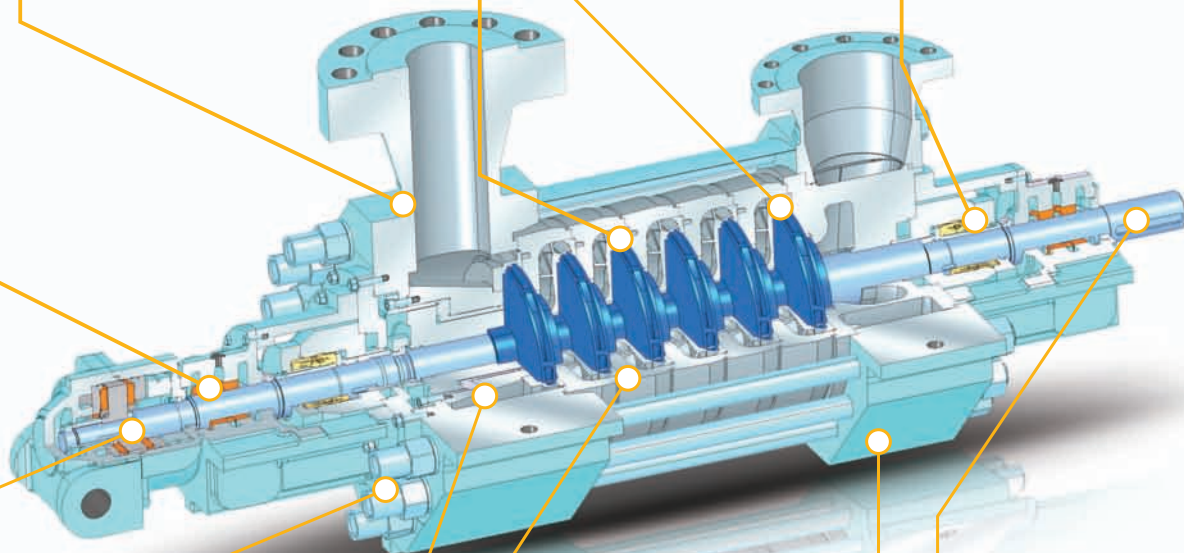
- Reduction in power consumption and CO₂ emission achieved by highly efficient hydraulic components
- Reliable performance and quality realized by precision-cast stainless steel impeller

First-stage Impeller

- Specialized first-stage impeller available for accommodating severe suction conditions

Shaft Sealing

- Minimized leakage and maintenance ensured by using reliable Torishima mechanical seals as standard equipment
- Cartridge mechanical seals, mechanical seals from other manufacturers, and gland packings optionally available



Assembly and Disassembly

- Bolt tensioner-compatible tie bolts for easy assembly and disassembly

Maintenance and Repair

- Various gaskets as well as wear rings, impellers, diffusers and stage casings kept in stock to offer quick part delivery

Driver

- In addition to standard direct motor drive, variable speed operation driven by a turbine, an engine or by a motor via hydraulic coupling is also available

Thrust Bearing

- No need for thrust bearing for standard (balancing disc sheet type) products; lifting device also available
- Tilting pad thrust bearing available for balancing piston (balancing drum) type
- Oil pump also available on NDE

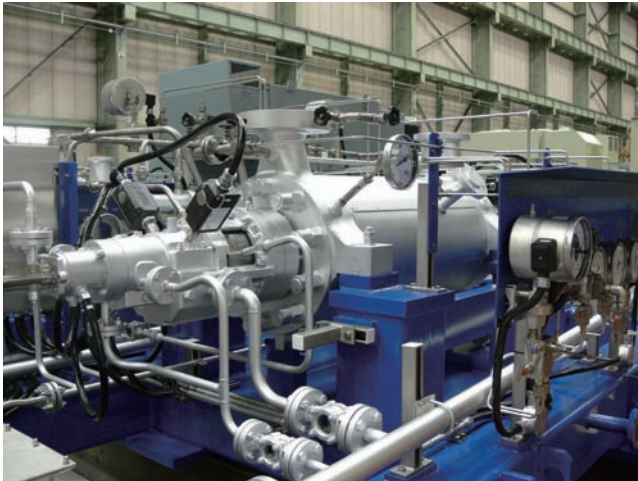
Balancing Devices

- Balancing devices reduce axial thrust; choice of balancing disc sheet type and balancing piston (balancing drum) type depending on the start-up/shut-down frequency
- Bearings, shaft sealing and balancing devices can be replaced and inspected without removing the tie bolts

Casings

- Standard forged casings ensuring high reliability
- Optional stainless cast steel casings also available
- No warming required in principle, providing rapid start-up and shut-down capabilities

References



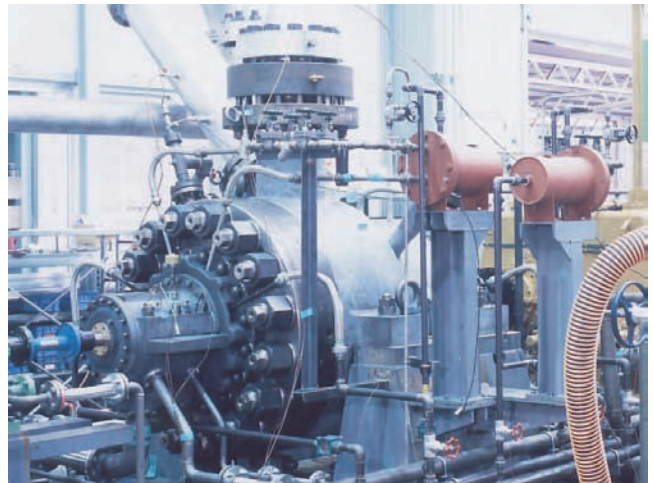
Qurayyah Combined Cycle Power Plant
Saudi Arabia
MHG, Boiler feed pump



Staythorpe C Combined Cycle Power Plant
UK
MHG, Boiler feed pump



Emal Aluminum Smelter Complex
UAE
MHG, HP Feedwater pump



Elbistan Thermal Power Plant
Turkey
MHB, Boiler feed pump

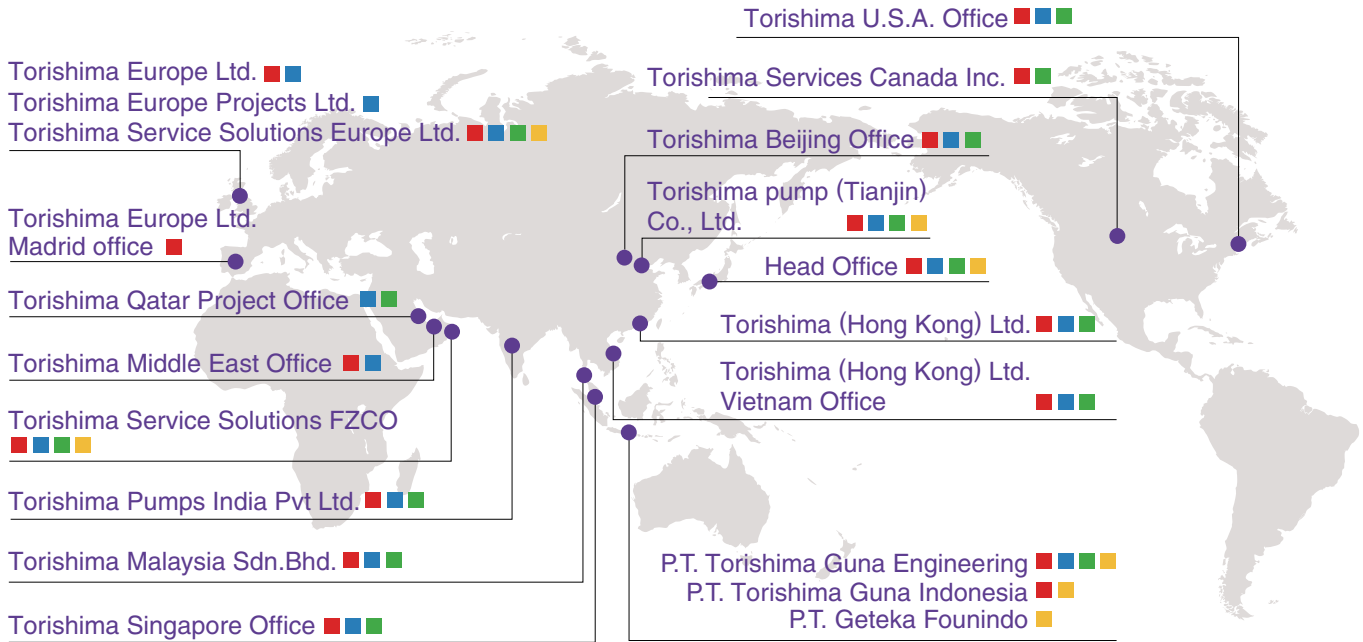


Saudi Kayan Petrochemical Complex
Saudi Arabia
MHB, Boiler feed water pump



Pacifico Coal Fired Power Plant
Mexico
MHB, Boiler feed pump

Global Network



TORISHIMA PUMP MFG. CO., LTD.

HEADQUARTERS

1-1-8 Miyata-cho, Takatsuki-city, Osaka 569-8660 Japan
Tel : +81-72-690-2308 / Fax : +81-72-690-2329

KYUSHU TORISHIMA

9857-13, Ohaza Kawako, Wakagi-cho, Takeo-city, Saga 840-0813 Japan
Tel : +81-954-26-3081 / Fax : +81-954-26-3080

TORISHIMA CHINA

BEIJING

Rm707, Building 1, KUNSHA CENTER,
No.16 Xinyuanli, Chaoyang District, Beijing,
P.R.China PC:100027
Tel : +86-10-84682891 / Fax : +86-10-84682890

TIANJIN

No.9 Gaoxin Road, Wuqing Development Zone,
Tianjin, China P. R
Tel : +86-22-59695601 / Fax : +86-22-59695609

TORISHIMA HONG KONG

Unit A, 21/F., Tower A, Billion Centre, 1 Wang Kwong Road,
Kowloon Bay, Kowloon, Hong Kong
Tel : +852-2795-1838 / Fax : +852-2754-3293

TORISHIMA VIETNAM

No.76 Bui Thi Xuan Street, Hai Ba Trung District,
Hanoi, Socialist Republic of Vietnam
Tel : +84-4-943-7880 / Fax : +84-4-943-7876

TORISHIMA SINGAPORE

30 Ubi Crescent #01-02 Ubi Techpark, Singapore 408566
Tel : +65-6779-0123 / Fax : +65-6779-6900

TORISHIMA MALAYSIA

Lot 19, 1st Floor Bangunan Ipmduda Jalan 13/2 46200
Petaling Jaya Selangor, Malaysia
Tel : +60-3-7960-5771 / Fax : +60-3-7960-5772

TORISHIMA INDIA

Tower B 1106, Millennium Tower, Sector27
Gurgaon-122002, Haryana, India
Tel : +91-124-4728950 / Fax : +91-124-4728950

TORISHIMA INDONESIA

TORISHIMA GUNA ENGINEERING

Jalan Rawa Sumur Timur No.1
Pulogadung Industrial Estate,
P.O.Box 1160, Jakarta, Indonesia
Tel : +62-21-460-3963 / Fax : +62-21-460-3937

TORISHIMA GUNA INDONESIA

Jalan Rawa Sumur Timur No.1
Pulogadung Industrial Estate,
P.O.Box 1160, Jakarta, Indonesia
Tel : +62-21-460-3963 / Fax : +62-21-460-3937

GETEKA FOUNINDO

JL Pulo Ayang Kav. AA2 Pulogadung Industrial Estate,
P.O.Box 1160 JAT, Jakarta 13011 Indonesia
Tel : +62-21-460-3963 / Fax : +62-21-460-3937

TORISHIMA U.A.E.

MIDDLE EAST OFFICE

5th Floor Office No.503 Al Salmeen Golden Tower
Electra Street, P.O.Box 53567, Abu Dhabi, U.A.E.
Tel : +971-2-674-3880 / Fax : +971-2-674-3881

TORISHIMA SERVICE SOLUTIONS

Plot of Land TP010501 Techno Park - Jebel Ali
PO Box. 37603 Dubai, U.A.E.
Tel : +971-4-886-5622 / FAX : +971-4-886-5633

TORISHIMA QATAR

Office No.11, 1st Floor, West corner centre,
Salwa Road, P.O.Box 37027 Doha, Qatar
Tel : +974-4450-6915 / Fax : +974-4450-6916

TORISHIMA EUROPE

Sunnyside Works, Gartsherrie Rd,
Coatbridge, Scotland ML5 2DJ
Tel : +44-1236-443951 / Fax : +44-1236-702875

MADRID OFFICE

Avda, Fuente Nueva 12A Edif, Monterrey, 28703
San Sebastian de los Reyes, Madrid, Spain
Tel : +34-91-284-6909 / Fax : +34-91-284-6901

TORISHIMA EUROPE PROJECTS

Hartham Park, Corsham,
Wiltshire, England SN13 0RP
Tel : +44-1249-700-290

TORISHIMA SERVICE SOLUTIONS EUROPE

Sunnyside Works, Gartsherrie Rd,
Coatbridge, Scotland ML5 2DJ
Tel : +44-1236-442390 / Fax : +44-1236-702875

TORISHIMA U.S.A.

100 Grove Street, Suite 217,
Worcester MA 01605-2654 U.S.A.
Tel : +1-508-753-6600 / Fax : +1-508-753-8276

TORISHIMA SERVICES CANADA

Suite 2800, 350-7th Ave S.W.
Calgary, Alberta T2P 3N9 Canada
Tel : +1-403-705-1933