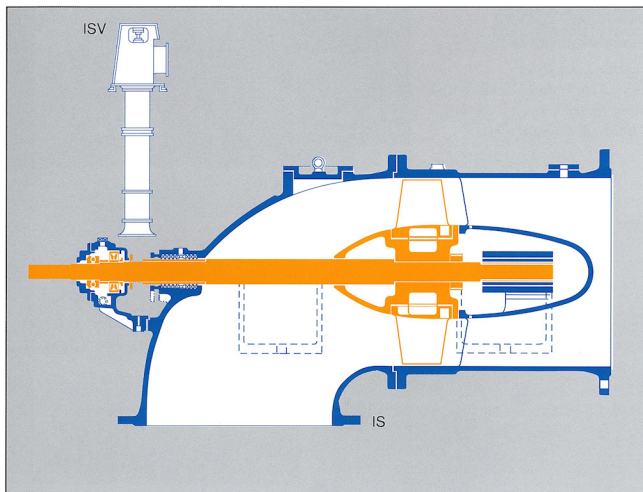


IS ISV (Vertical)

Axial Flow Pumps



IS and ISV are the very excellent pumps in the reliability, proved by the many years' actual results and the latest technology.

Applications

- Sewerage
- Flood control
- Irrigation
- Cooling water etc.

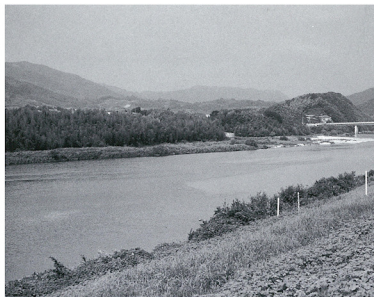
Specifications

Total head : 1.5m to 8m

Capacity : 11m³/min to 3, 100m³/min

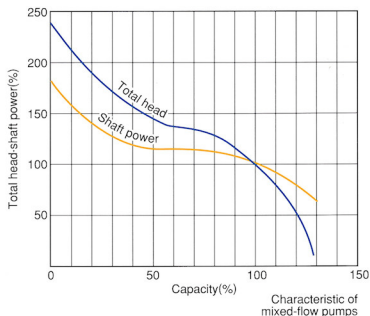
Operating temperature : 0 to 40°C

Size : 400 to 4, 600mm

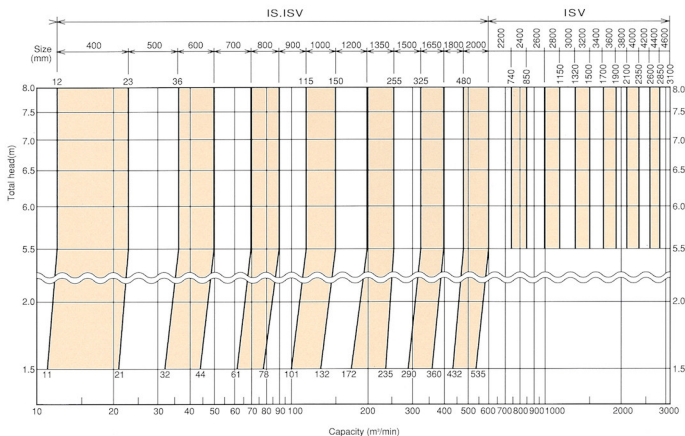


Features

- * Compact construction with Cylindrical Casing enable the installation on the smaller space compared with mixed flow pumps.
- * Easy maintenance due to the simple construction . In case of horizontal IS type, upper casing can be removed without dismantling the connection pipeworks.
- * Large water passing area is also suitable for sewage application.
- * Motor overloading can be avoided as the pump starts after opening of discharge valve
- * Less required power in the operation at lower head than the rated head.



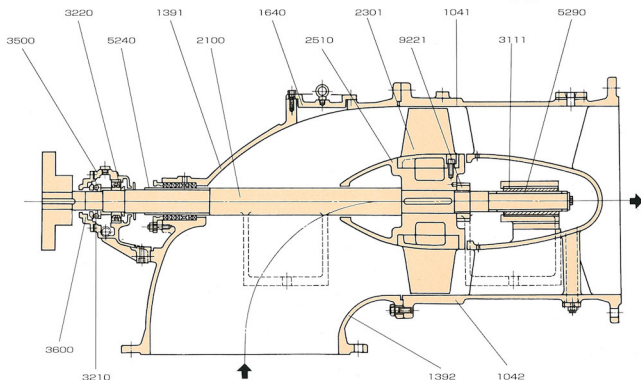
Selection Chart



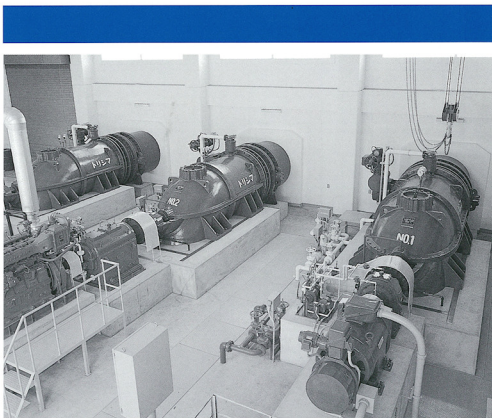
IS Sectional drawing

* Shaft is supported by two bearings. Internal bearing is Ceramic Bearing and external bearing is radial ball bearing combined with thrust ball bearing as standards.

* Standard shaft seal is soft gland packing but mechanical seal can be equipped.

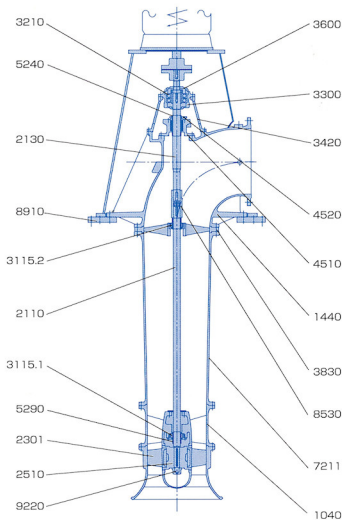


No.	Parts name
1041	Upper propeller casing
1042	Lower propeller casing
1391	Upper suction elbow
1392	Lower suction elbow
1640	Mud cover
2100	Shaft
2301	Propeller
2510	Propeller boss
3111	Submersible bearing
3210	Ball bearing
3220	Roller bearing
3500	Bearing bracket
3600	Bearing cover
5240	Packing sleeve
5250	Distance sleeve
5290	Bearing sleeve
9221	Propeller nut

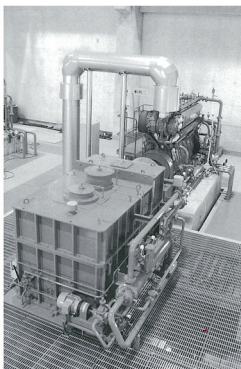
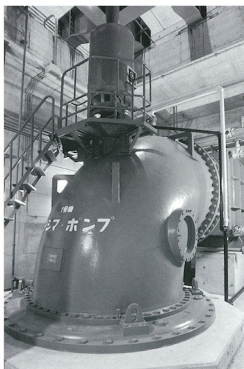


ISV Sectional drawing

- * Submersible bearings are standardized with Ceramic or Teflon bearing. Both bearings do not need any lubrication at the starting time and during operation.
- * The pump thrust is supported by the pump upper thrust bearing as standard. In case of large size pump driven by large capacity drive motor, pump thrust will be supported by the reduction gear or by the motor.



No.	Parts name
1040	Propeller casing
1440	Discharge elbow
2110	Lower shaft
2130	Upper shaft
2301	Propeller
2510	Propeller boss
3115.1	Ceramic bearing
3115.2	Ceramic bearing
3210	Ball bearing
3300	Bearing case
3420	Bearing stool
3600	Bearing cover
3830	Bearing
4510	Stuffing box
4520	Stuffing box gland
5240	Packing sleeve
5290	Bearing sleeve
7211	Riser pipe
8530	Shaft coupling
8910	Base plate
9220	Propeller nut



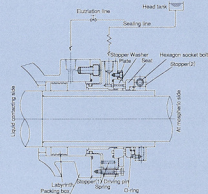
For saving energy, saving resource, saving labor and the improvement of the reliability of pump facility

WATER SAVING SEAL

Provision of water saving type mechanical seal needs a little sealing water which can eliminate traditional sealing system consisting of magnetic valve, flow relay etc.

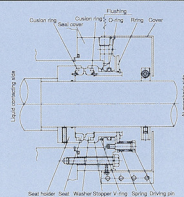


- * Only one head tank shall be installed 1m above the pump center.



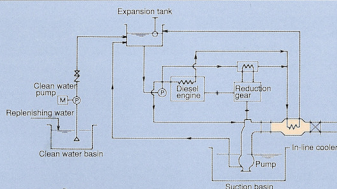
NON WATER SEALED MECHA.SEAL

No sealing water is required at all. Sealing surfaces can be lubricated by pumping water irrespective of the nature of pumping water.



IN-LINE COOLER

By providing this cooler in the discharge pipeline with close circuit through expansion tank, necessary cooling water can be supplied for the cooling of reduction gear, diesel engine. Only evaporated water from the expansion tank has to be feed supplementary



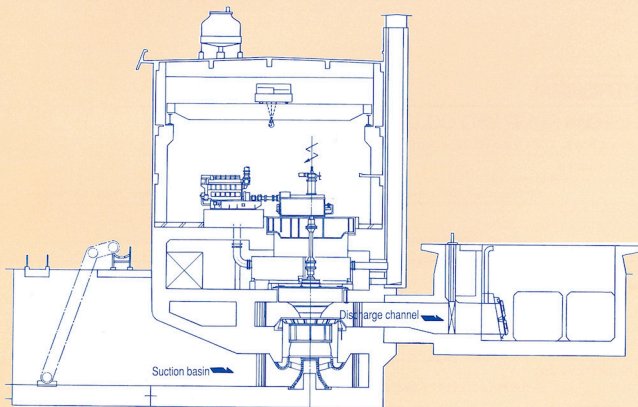
ADJUSTABLE VANE

The angle of propeller vanes is adjustable to suit the most effective operation point.

Blade control is by manual, mechanical or hydraulic.



Adjustable vane propeller of
3600 ϕ vertical axial-flow pump





TORISHIMA PUMP MFG.CO.,LTD.

Head Office & Works: 1-1-8, Miyata-cho, Takatsuki City, Osaka, Japan. Phone: 0726-95-0551 Telex: 5336568 TORIPIJ Telefax: 0726-93-1288

TORISHIMA SINGAPORE

TORISHIMA SINGAPORE PTE.LTD.

192 Pandan Loop, #06-27 Pantech Industrial Complex Singapore 128381 Phone: (65)7790123 Telefax: (65)7796900

TORISHIMA HONG KONG

TORISHIMA (HONG KONG) LIMITED

Unit 603, 6/F., Tower III, Enterprise Square, 9 Sheung Yuet Road, Kowloon Bay, Kowloon, Hong Kong

Phone: (852)2795-1838 Fax: (852)2754-3293

TORISHIMA INDONESIA

P.T. TORISHIMA GUNA INDONESIA:

JL Rawa Sumur Timur No.1, Pulogadung Industrial Estate, P.O Box.:1160 JAT., Jakarta 13930, Indonesia

Phone: (62)21-460-3963,(62)21-460-3964,(62)21-480-0205 Fax:(62)21-460-3937

P.T. TORISHIMA GUNA ENGINEERING

JL Rawa Sumur Timur No.1, Pulogadung Industrial Estate, P.O Box.:1160 JAT., Jakarta 13930, Indonesia

Phone: (62)21-460-3963,(62)21-460-3964,(62)21-480-0205 Fax:(62)21-460-3937

P.T. GETEKA FOUNINDO

JL Pulo Ayang Kav. AA2 Pulogadung Industrial Estate, P.O Box.:1160 JAT., Jakarta 13011, Indonesia

Phone: (62)21-460-3936,(62)21-460-3937 Fax: (62)21-460-3937
